



Animation

Video Games



Biomechanics

Simulation
Training



Robotics

Neuroscience



PHASESPACE
MOTION CAPTURE
The Active Marker Advantage

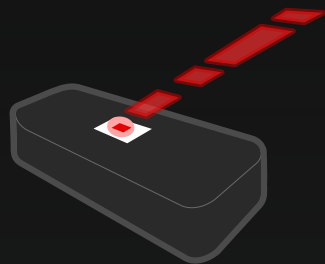


SAN LEANDRO, CA

510.633.2865
INQUIRIES@PHASESPACE.COM

PHASESPACE.COM

THE PHASESPACE ADVANTAGE

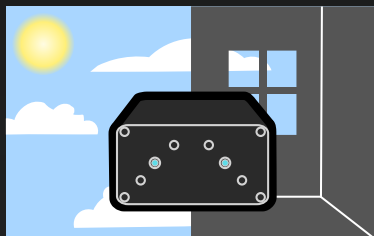


**Uniquely
Identified
Active
Markers**

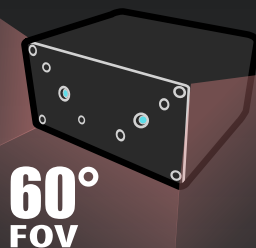
**High
Framerate
At Full
Resolution**



**Capture
Indoors
Or Outdoors**



**Capture In
Large And
Small Areas**

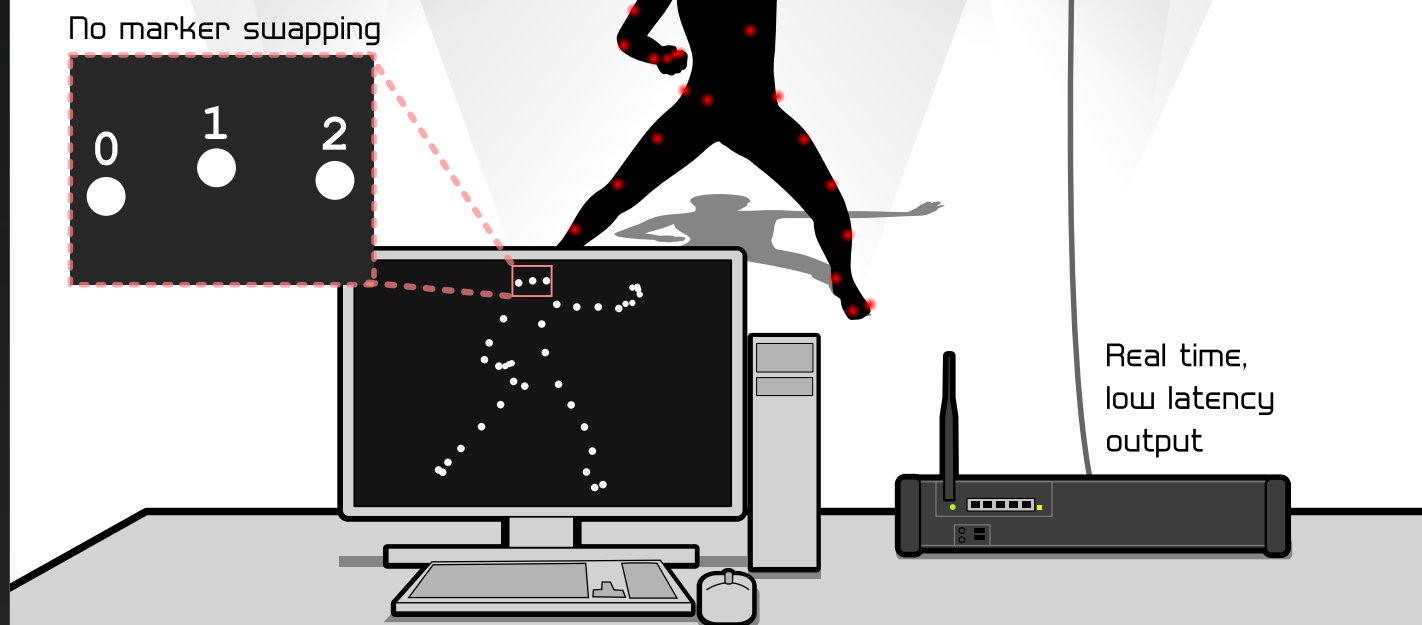
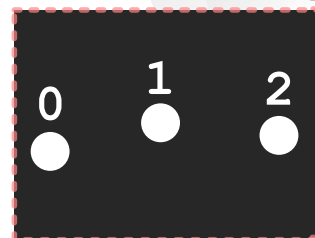


**60°
FOV**



Easy to use with
quick setup and calibration

No marker swapping



Real time,
low latency
output

IMPULSE X2 SYSTEM

FRAME RATE	960 fps at full resolution	MARKER TYPE	Uniquely identified active markers
SUBPIXEL RESOLUTION	30,000 x 30,000	LED TYPE	Visible red and infrared LED options
LATENCY	Less than 10 ms	MARKER DIMENSIONS	As small as 3mm x 4.5mm
CAMERA FIELD OF VIEW	60 degrees, allowing setup in confined areas.	API/SDK	C++, Python, VRPN
NUMBER OF CAMERAS	Up to 50	COMPATIBLE SOFTWARE	MotionBuilder, The MotionMonitor, Visual3D, ORBIS, Unity, LabView...

PHASESPACE.COM